

photoshop

CONVERTING COLOR TO BLACK & WHITE



THIS PUBLICATION IS © LISA CARTER 2005.

ANY REPRODUCTION OR UNAUTHORIZED DISTRIBUTION MAY BE PUNISHABLE BY LAW

There are many ways to convert a color photo to B&W in photoshop. In this tutorial I will show you 3 of the ways. Two have detailed steps and the last one is just a description.

You can then choose which method you prefer. Remember each photo is different, so what looks best on one will not look best on another.

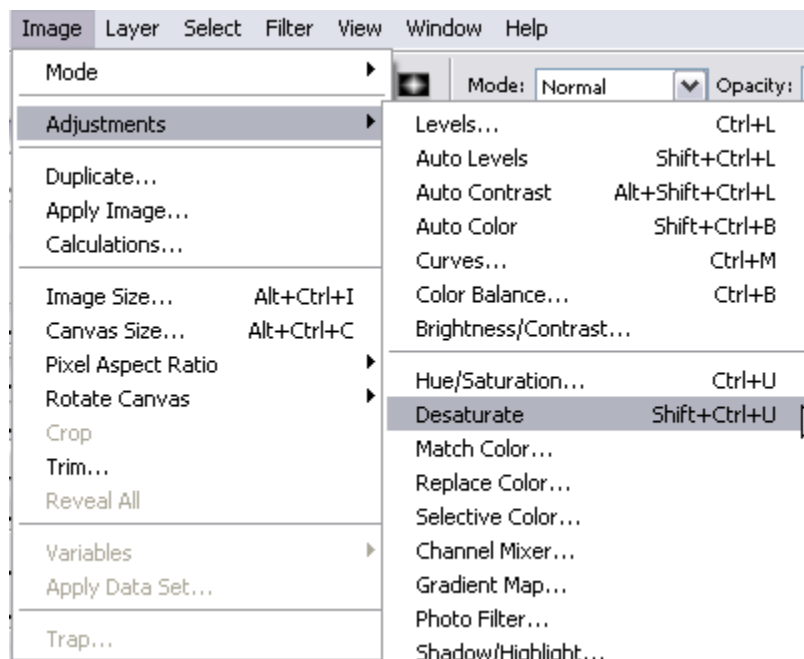
DESATURATION METHOD

STEP 1:

Open Photo

STEP 2:

Image>Adjustments>Desaturate (CTRL+SHIFT+U)



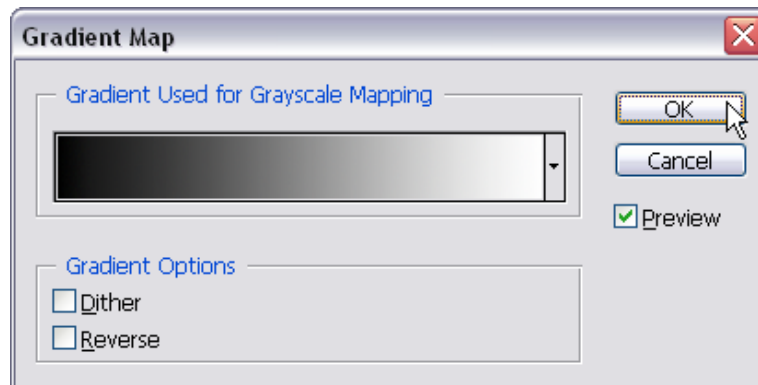
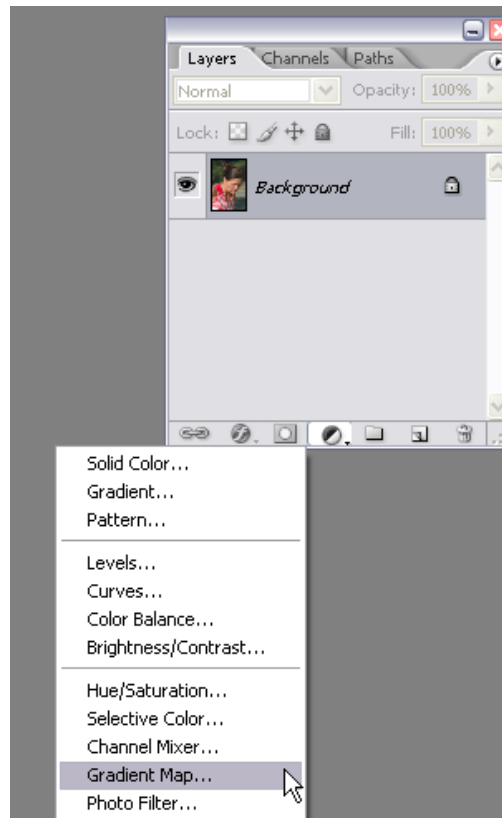
GRADIENT MAP METHOD

STEP 1:

Open Photo

STEP 2:

Create a new fill or adjustment layer (*this is the half black/half white circle at bottom of layer palette*)
Choose **Gradient map**



STEP 3:

Click OK



DESATURATE METHOD

This is one of the quickest ways to turn a photo to B&W, but....it is not one of the best ways. Personally...I very rarely use this method as I do not like the end results.



DESATURATE METHOD

This is one of the quickest ways to turn a photo to B&W, but....it is not one of the best ways. Personally...I very rarely use this method as I do not like the end results.

CHANNEL MIXER METHOD

Instead of choosing Gradient map Choose the Channel Mixer.

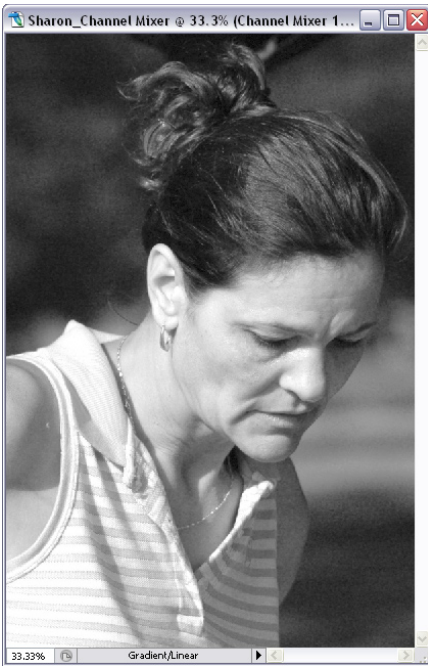
Make sure you have checked the Monochrome Box at bottom

Keep one Source Channel at 100% and the other 2 at 0%.

Since each photograph is different... the BEST Source Channel ot have at 100% will vary from photo to photo.

Adjust the settings to see which one you like best.

There are other methods also.. as you learn Photoshop you will learn that there are many many ways to achieve similar results.



CHANNEL MIXER

RED 100%
GREEN 0%
BLUE 0%
CHANNEL MIXER



CHANNEL MIXER

RED 0%
GREEN 100%
BLUE 0%



CHANNEL MIXER

RED 0%
GREEN 0%
BLUE 100%

THE
END