

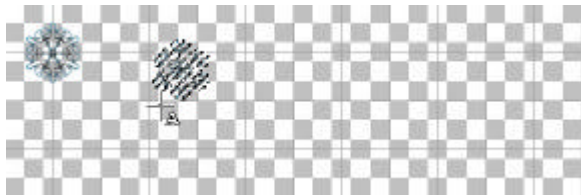
Tutorial: Chenille Stems from a PSP Tube
by Pam Fischer

Do you use the picture tube tool in Paint Shop Pro? It's more than a simple stamping tool, it can be a brush tool to create elaborate lace, stitching, beaded items, braids, ribbons, and garland! Have you ever created your own Paint Shop Pro picture tube? Using this tutorial, you can create a PSP picture tube that will look much like a pipe cleaner or chenille stems.

If you open some picture tubes, you will see that some have several images, evenly spaced. For a fuzzy, irregular edge I chose a font with shapes. Thinking that a snowflake font might work well, I visited dafont.com and chose a free font called Faux Snow (created by Brian Kent). Install the font. To create a stem that seems to have a wire down the middle, I decided to use a gradient color arranged in a sunburst with the darker color in the center.

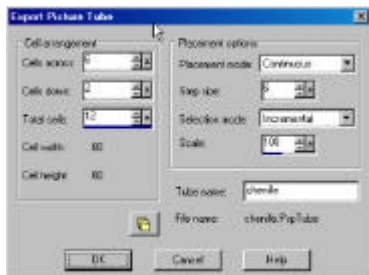
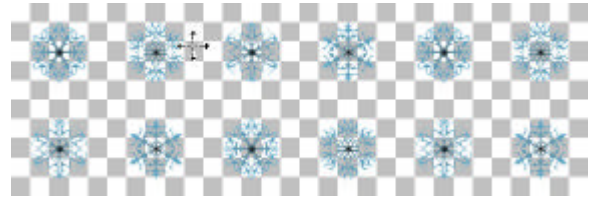


I decided on upper case D, G, I, and K.



Make this gradient your background color (to use with text). Create a new document and type the upper case letters D, G, I, and K - but do this one at a time so the gradient will apply to that snowflake alone. While the snowflake is still selected, move it into position (I used the grid and snap to grid - my document is 480 x 160 and my grids are set at 40, the font size I used is 72)

Merge visible layers and File > Export > Picture Tube. The settings are determined by the rows and columns -- we have created 6 cells across and 2 cells down. The placement should be set at Continuous, the step size at 8, and the Selection Mode as Incremental. The scale is 100 and choose a name for your tube - I chose chenille.

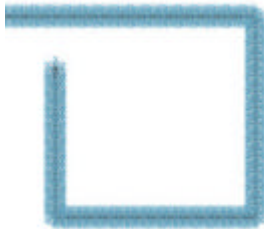


After exporting your Picture Tube it's ready to use! Create a new document and select your Picture Tube tool. In the toolbar, find the drop down box to select a tube to use. Leave the settings as we have them for now -- if you decide you'd like to increase or decrease the size, change the scale from 100% upwards or down -- but leave the other settings the same.

For more fun, download the Vector Tube script at [this website](#), unzip it and place it in your Scripts-Restricted folder. There is also a script for brushes. This script allows you to draw a vector line or use a vector shape and then choose a tube (or brush) to paint it with (image to the right was painted on a vector line).

After using the script, you'll want to go to the [Corel Paint Shop Pro website](#) and find the tube of Scrapbooking Embellishments (there are stitches in it). Using this tube and the script, you can stitch along vector lines and shapes.

Then visit [this site](#) shows how to create a tube that will look like crochet.



[Click here for a printable copy of this tutorial.](#)

© 2006 Pam Fischer